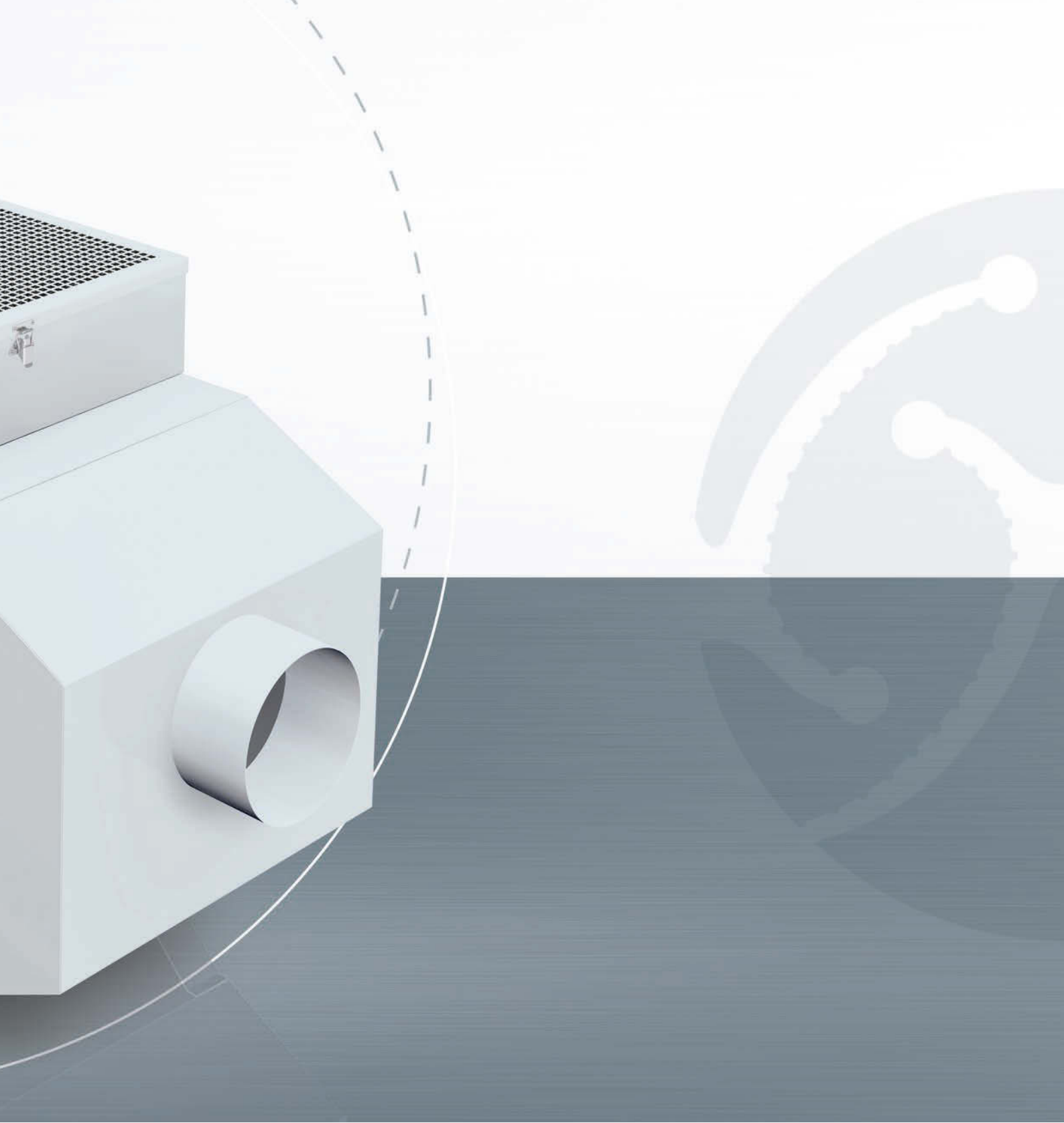




X-CYCLONE® CE Series

Electrostatic air cleaners for oil-based aerosols





RANGE OF APPLICATION

Cleaning of the exhaust air from processing machines, coating plants or food-processing lines. Separation of oil-based aerosols such as cooling lubricants or spray mist.

TECHNICAL HIGHLIGHTS

- Combination of the patented high-performance X-CYCLONE® separating system and an electrostatic precipitator with an efficiency rate of up to 99.9999 %.
- Compliance with ozone exposure limits.
- Sustainable air-cleaning concept thanks to the use of cleanable separators.
- Fan impeller and motor with energy-efficient eco-design in accordance with the European Directive on Energy-related Products (ErP). Energy-saving potential of up to Euro 2,000 per year compared to traditional air cleaners.
- Efficiency and function of the air cleaner proven by CFD flow analysis.
- Flame-arresting X-CYCLONE® basic elements, tested in accordance with UL 1046, ULC-S 649, JFEA, DIN 18869-5 and DIN EN 16282.
- Agglomeration system made of stainless steel, suitable for the removal of PM_{2.5}.
- Enclosure 100 % rustproof in accordance with the requirements of the German trademark association for stainless steel Warenzeichenverband Edelstahl Rostfrei e.V.
- Intelligent functional display and high-voltage module.
- Designed, constructed and produced in Germany.
- State-of-the-art design protected by international design patent rights.



Further information

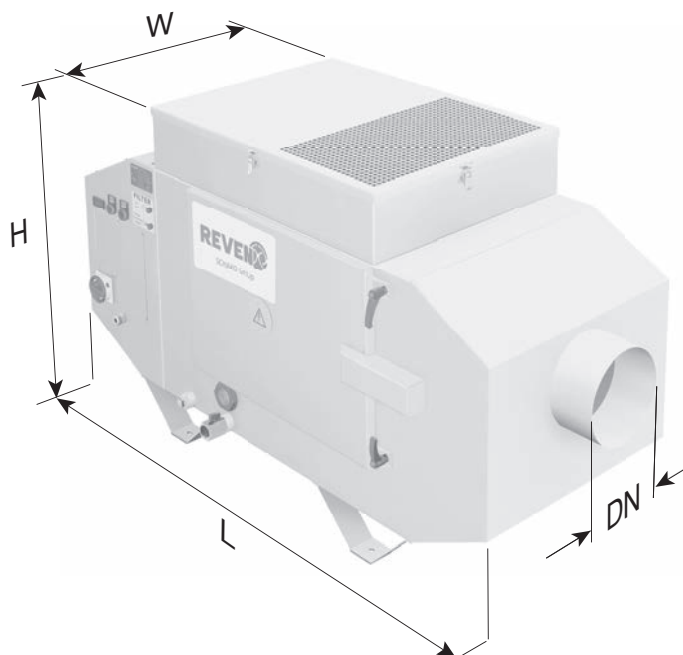
www.speed-control.info



- Lifetime guarantee on the X-CYCLONE® basic separator elements and the corrosion resistance of the enclosure.

ACCESSORIES

- Digital fan module.
- REVEN® Pipe.
- Particulate air filter top unit, suitable for processes with high smoke emission.
- Self-cleaning REVEX® HEPA filters, suitable for aerosols with ultrafine solid and liquid particles.
- Agglomeration system made of stainless steel, suitable for the removal of PM_{1.0}.
- Chip protection, activated carbon filter and bag filter.
- Extraction hoses, capture hoods and brackets.



TECHNICAL DATA – X-CYCLONE® CE SERIES

Type of device	Extraction volume [m³/h]		Collectors	Electrical data						Dimensions				Weight [kg]	Noise level [db (A)]
				Voltage [V]		Current [A]		Power 3* [W]		Length [mm]	Width [mm]	Height [mm]	Connecting diameter DN [mm]		
				50 Hz	60 Hz	50 Hz	60 Hz	50 Hz	60 Hz						
1*	2*		50 Hz	60 Hz	50 Hz	60 Hz	50 Hz	60 Hz							
CE10-1	1000	1500	1	3~400	3~460	0.90	0.77	440	1335	560	810	200	117	65	
CE10-2	1000	1500	2	3~400	3~460	0.90	0.77	440	1540	560	810	200	143	65	
CE10-3	1000	1500	3	3~400	3~460	0.90	0.77	440	1755	560	810	200	169	65	
CE17-1	1700	2600	1	3~400	3~460	1.61	1.43	650	1375	525	900	200	121	67	
CE17-2	1700	2600	2	3~400	3~460	1.61	1.43	650	1590	525	900	200	148	67	
CE17-3	1700	2600	3	3~400	3~460	1.61	1.43	650	1800	525	900	200	175	67	
CE25-1	2500	4500	1	3~400	3~460	4.43	4.85	1550	1375	650	900	300	150	70	
CE25-2	2500	4500	2	3~400	3~460	4.43	4.85	1550	1590	650	900	300	185	70	
CE25-3	2500	4500	3	3~400	3~460	4.43	4.85	1550	1800	650	900	300	219	70	

1* Extraction volume when connected to the extraction system with the filter(s) installed.

2* Extraction volume in unconnected, free-blowing state without filter.

3* Power data referring to the operational power.

Other voltages on request!