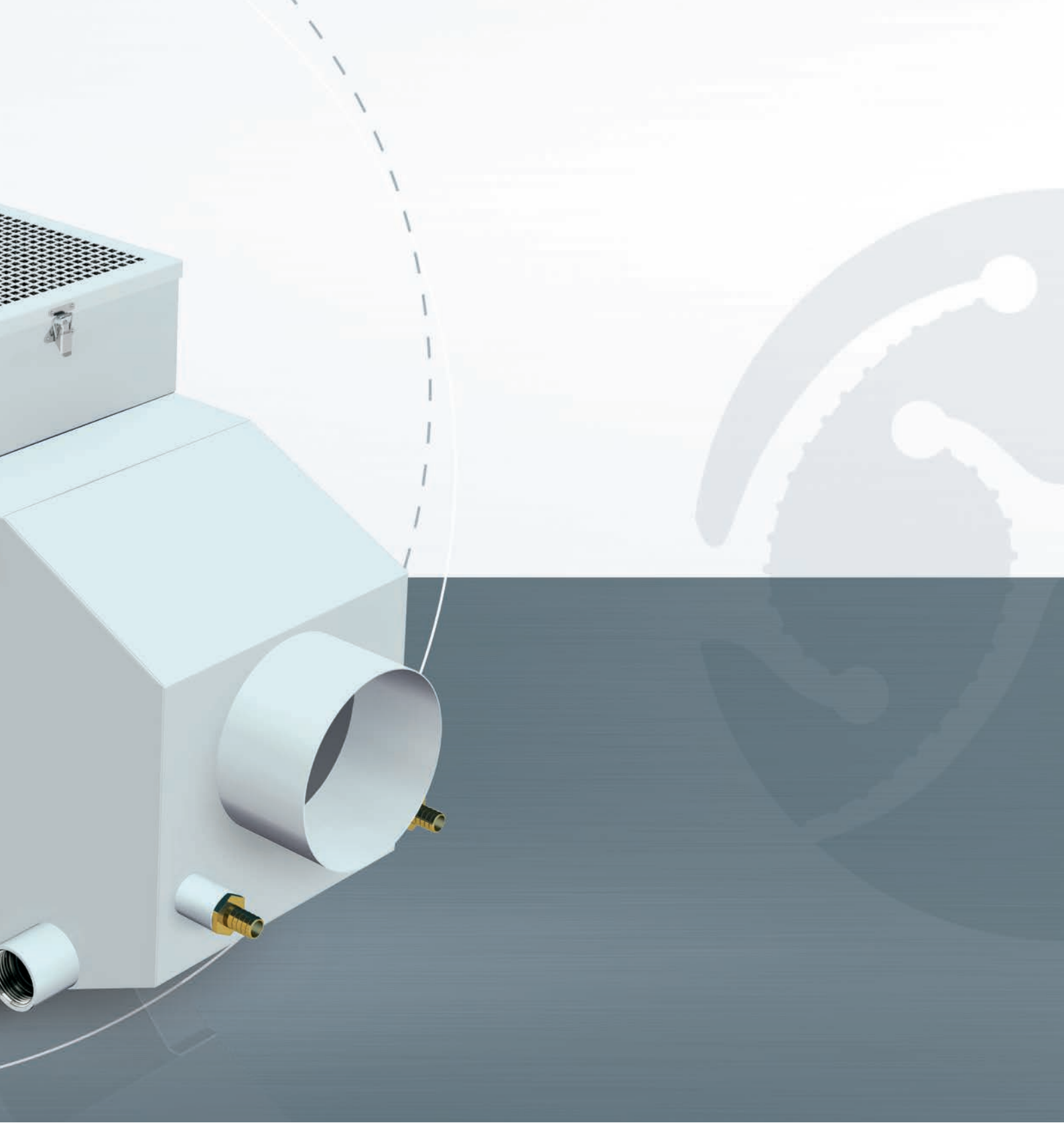


X-CYCLONE® CR Series

Compact air cleaners with REVEX® spraying technology



RANGE OF APPLICATION

Cleaning of the exhaust air from cleaning facilities, cast machining tools, hardening furnaces, carbon fibre and plastics processing plants. Separation of dry, adhesive, solid and vaporous substances

TECHNICAL HIGHLIGHTS

- Patented high-performance X-CYCLONE® separating system with an efficiency rate of up to 99.9999 %.
- Patented REVEX® spraying technology with cleaning and air washing function.
- Sustainable air-cleaning concept thanks to the use of cleanable separators.
- Fan impeller and motor with energy-efficient eco-design in accordance with the European Directive on Energy-related Products (ErP). Energy-saving potential of up to Euro 2,000 per year compared to traditional air cleaners.
- Efficiency and function of the air cleaner proven by CFD flow analysis.
- Flame-arresting X-CYCLONE® basic elements, tested in accordance with UL 1046, ULC-S 649, JFEA, DIN 18869-5 and DIN EN 16282.
- Agglomeration system made of stainless steel, suitable for the removal of PM_{2.5}.
- Enclosure 100 % rustproof in accordance with the requirements of the German trademark association for stainless steel Warenzeichenverband Edelstahl Rostfrei e.V.
- Intelligent functional display.
- Designed, constructed and produced in Germany.
- State-of-the-art design protected by international design patent rights.



Further information

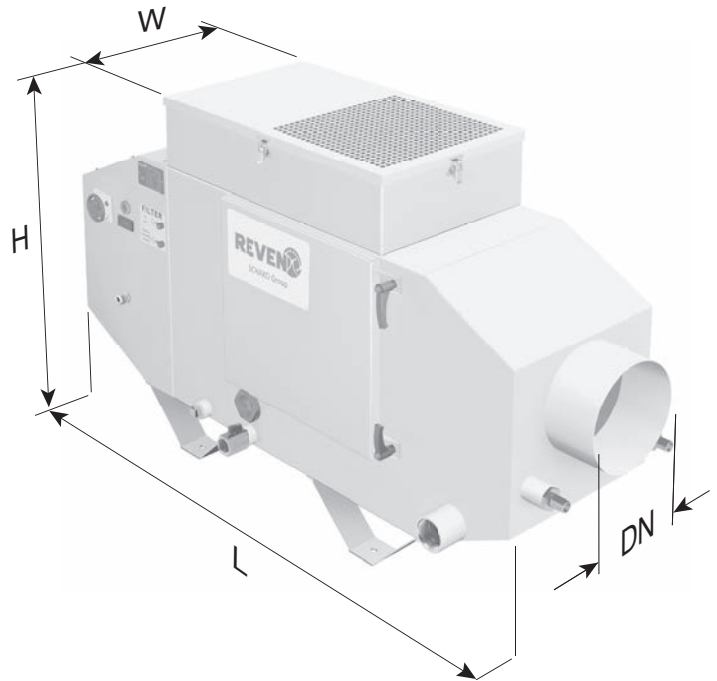
www.reven.de (Technologies)
www.speed-control.info



- Lifetime guarantee on the X-CYCLONE® basic separator elements and the corrosion resistance of the enclosure.

ACCESSORIES

- Digital fan module.
- EUREVEN® F2011 filter made of moisture-repelling, synthetic material, easy to clean; suitable for low smoke generation.
- Particulate air filter top unit, suitable for processes with high smoke emission.
- Self-cleaning REVEX® HEPA filters, suitable for aerosols with ultrafine solid and liquid particles.
- Honeycomb agglomerator, suitable for high steam concentrations.
- Chip protection, activated carbon filter and bag filter.
- Extraction hoses, capture hoods and brackets.



TECHNICAL DATA – X-CYCLONE® CR SERIES

Type of device	Extraction volume [m³/h]		Electrical data						Dimensions				Weight [kg]	Noise level [db (A)]
			Voltage [V]		Current [A]		Power 3*		Length [mm]	Width [mm]	Height [mm]	Connecting diameter DN [mm]		
			50 Hz	60 Hz	50 Hz	60 Hz	50 Hz	60 Hz						
CR-2	700	1500	3~400	3~460	0.90	0.77	400		1065	360	765	150	52	63
CR-3	1100	2600	3~400	3~460	1.61	1.43	650		1200	370	765	200	60	65
CR-4	1600	4000	3~400	3~460	3.07	2.69	1400		1250	450	845	200	84	67
CR-5	2400	4500	3~400	3~460	4.43	3.85	1550		1280	550	925	300	116	67
CR-6	3800	6800	3~400	3~460	5.77	5.01	2650		1300	655	1045	300	158	72
CR-7	4800	10500	3~400	3~460	7.60	6.67	3650		1400	820	1205	400	246	72

1* Extraction volume when connected to the extraction system with three filters installed.

2* Extraction volume in unconnected, free-blowing state without filter(s).

3* Power data referring to the operational power.

Other voltages on request!