



KERF DEVELOPMENTS LIMITED
TAILORED PROFILING SOLUTIONS

INTRODUCING THE Linc-Cut

“Ideal for a range of plasma cutting applications the Linc-Cut 1530 is a modern designed machine with a small footprint making it ideal for smaller workshops.”



The Linc-Cut is a high quality, flexible machine that consists of established and renowned components from Lincoln Electric. It offers customers' quality, value and service. This turnkey package includes the machine, software, installation and training.

QUALITY & RELIABILITY

The Linc-Cut plasma cutting machine is a complete cutting system with high quality single-source components. It has an excellent build quality and has been designed for simple plug and play installation.

The ACCUMOVE motion control technology offers advanced machine control and combines all functions to simplify use.

It provides increased processing power and synchronisation of each component on the table. Height control, motors and computer aided manufacturing software, are all managed with a single operating system - keeping the entire communication loop under one display.

The Linc-Cut 1530 plasma cutting machine is available with either a 3m x 1.5m sized water cutting table or with downdraught cutting tables.



KERF DEVELOPMENTS LIMITED
TAILORED PROFILING SOLUTIONS



Why the Linc-Cut is right for you

- ✓ You want a compact machine but don't want to compromise on the machine build quality
- ✓ You have limited space available and need a machine with a small footprint
- ✓ You want a quality machine that will provide you with years of reliable operation with proven post-sales support available
- ✓ You need a machine that is easy to use



INTRODUCING THE **Linc-Cut**

- ➔ Process management – all parameters are controlled from the interface depending on the simple choice of material and thickness simplifying the implementation of plasma cutting. Several functions increase cycle productivity and automatically compensate for consumable wear.
- ➔ Plate alignment – simplifies material loading, especially when dealing with thicker metal sheets. Regardless of the orientation of the sheet, the ACCUMOVE controller adjusts the trajectory accordingly.
- ➔ Laser positioning mode – simplifies the use of the machine for aligning the sheets, defining the starting point or in test mode.
- ➔ 36 standard shapes – comes pre-loaded into the software and includes a set of parametric shapes from a basic rectangle to complex circular flanges.
- ➔ Automatic nesting module – load your dxf or dwg files, enter the quantity and the software will generate your production schedule automatically.



**MAKE THE CUT WITH
SPEED AND POWER**
FLEXCUT 125

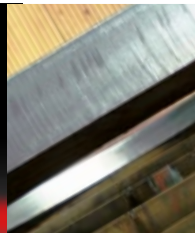
For details on the range of machines offered by Kerf including its oxy-fuel, plasma, ultrasharp plasma and waterjet cutting systems:

Contact us on **+44 (0)1706 757670**
or email sales@kerfdevelopments.com



KERF COMPREHENSIVE SUPPORT

Kerf supplies and supports a wide range of machine tools. The engineering team also re-engineer and restore older machine tools and sell a wide range of spare parts and consumables from stock.



ALSO IN THE KERF CUTTING MACHINE RANGE



**RUR – The best-selling Kerf machine for
UltraSharp plasma applications**



**RUM – for wider and heavier applications
with oxy-fuel and plasma**



**OPTIMA – waterjet cutting machine to cut
the widest range of materials**

SEE IT FOR YOURSELF

See a machine in action or want a cut sample?
Please contact us and we will arrange a
demonstration or a sample to be sent to you.
Call **+44 (0)1706 757670** today



FIND OUT MORE NOW
CONTACT US ON: +44 (0)1706 757670
or visit www.kerfdevelopments.com
email sales@kerfdevelopments.com

Unit 1A Eagle Technology Park, Queensway, Rochdale, OL11 1TQ, UK



GO DIRECT TO OUR SITE
ON YOUR MOBILE DEVICE,
SCAN IN THE QR CODE.