

# TECHNOLOGY DAY

June 25<sup>th</sup>, 2025 • Stratford-upon-Avon CV37 9NQ



Our partners:

**MMC Hardmetal UK Ltd.**

A Sales Company of  MITSUBISHI MATERIALS



## INVITATION • STEEL MILLING MADE SIMPLE

Make your production fit for the future and see the 5-axis universal machining centers and various automation and digitalisation solutions from GROB – in combination with the right precision tools from Mitsubishi Materials DIAEDGE, the CAD/CAM software hyperMILL® from OPEN MIND and SCHÜSSLER live on site.

### HIGHLIGHTS

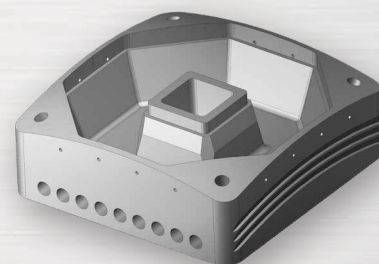
- ▶ Machining of a steel component
- ▶ Application of the latest machining strategies and processes
- ▶ Focus area: Mechanical engineering, steel machining and general purpose

### 5-AXIS UNIVERSAL MACHINING CENTER G550 LIVE IN ACTION

- ▶ Powerful HSK-A63 spindle
- ▶ High machine stability thanks to innovative axis arrangement and horizontal spindle concept

### FOCUS OF THE WORKSHOP

- ▶ Best complete performance in steel machining
- ▶ Modern programming strategies for roughing & finishing with the right tool selection
- ▶ IMX range & finish milling
- ▶ Recycling & re-manufacturing
- ▶ Project engineering & solutions



### AGENDA

09:00 – 09:30	Arrival
09:30 – 12:15	Event Start – Live cutting demo's
12:15 – 13:00	Lunch
13:00 – 15:30	Discussion – Live cutting demo's/Conclusion
15:30 – 16:00	Close

### TOPICS PRACTICAL PART

- ▶ **Advantages of the horizontal spindle position for volume machining with HSK-A63**
- ▶ **Simultaneous machining with new tool and programming strategies**



**COME AND VISIT US!**  
Save your free ticket now!

**GROB MACHINE TOOLS UK LTD.**

Timothy's Bridge Road, Stratford-upon-Avon CV37 9NQ, Warwickshire • UK

Your contact person for the technology day: Mr. Carl Downing | E-mail: [Carl.Downing@grobgroup.com](mailto:Carl.Downing@grobgroup.com)



[www.grobgroup.com](http://www.grobgroup.com)

# OUR PARTNERS

June 25<sup>th</sup>, 2025



## MMC HARDMETAL UK LTD.

MMC Hardmetal UK, located at Tamworth in the UK is a Sales Company of Mitsubishi Materials Corporation and an integral part of the European cutting tools division. Over the past 30 years our company has been delivering high quality cutting tools and integrated solutions that help customers' keep pace with the latest technological requirements and market trends. Alongside the Head Office, four further national subsidiaries and a wide distribution network offer sales and engineering services throughout Europe. Another subsidiary of the Corporation operates in Spain where there is a production plant as well as a sales office.

Our product portfolio includes a wide variety of cutting tools from Mitsubishi Materials for drilling, milling and turning, all carefully developed to supply customers from our core business areas such as the automotive, aerospace, medical, mould and die and general machining industries.

Committed to our values and dedicated to the success of our customers, we work closely together building lifelong relationships. Our deep technical expertise and know how enable us to offer intelligent, cost-effective solutions.

With many years of industry experience and Head Offices in Japan, USA, Asia and Europe, position Mitsubishi Materials Corporation amongst the leading companies in the development and production of materials, coatings and precision tools for the metalworking industry worldwide.

### MMC Hardmetal UK Ltd.

A Sales Company of  MITSUBISHI MATERIALS

## OPEN MIND TECHNOLOGIES AG

OPEN MIND develops optimized CAD/CAM solutions that include a large number of innovative and unique features that can deliver significantly higher performance in both programming and machining. *hyperMILL*® is a completely modular CAD/CAM solution that provides state-of-the-art CAM technologies on its own CAD platform: from 2.5D, 3D and 5-axis machining as well as turning strategies and solutions for additive manufacturing, HSC and HPC machining.

OPEN MIND's majority stake in manufacturing execution system (MES) developer Hummingbird expands the CAD/CAM manufacturer's product portfolio and enhances the range of connected digitalized manufacturing technologies.



## SCHÜSSLER

The production of high-precision tool clamping systems is SCHÜSSLER's expertise. Not only machines and tools are essential for achieving perfect results, the clamping of the tools also plays an important role: we have been producing high-quality tool clamping systems 'Made in Germany' for over 50 years. In addition to the high level of service and impressive quality, our unique selling point is the partnership-based cooperation with our customers.



## TECHNOLOGY DAY AT GROB

Our state-of-the-art Stratford facility, a significant milestone in our commitment to providing unparalleled support to our customers across the UK. This advanced center is designed to deliver hands-on machining, prove-out services, demonstrations, and comprehensive project support, all under one roof.

Equipped with the latest GROB machining technology, our Stratford facility allows us to work directly with customers to tackle unique challenges, optimize production processes, and bring innovative solutions to life.

**We look forward to seeing you!**  
GROB MACHINE TOOLS UK LTD.

